

A PART OF LOT 3, BLOCK 12, PLAT A, PLAIN CITY SURVEY
JANET SUBDIVISION

TAXING UNIT: 21

IN PLAIN CITY
SCALE 1" = 30'

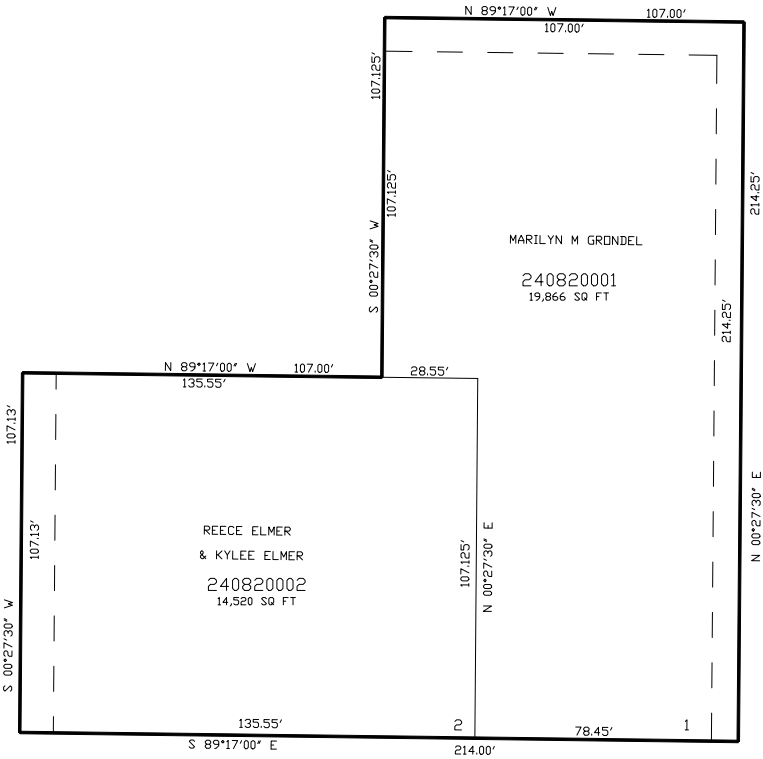
SEE PAGE 36

2500 NORTH STREET

SEE PAGE 36

SEE PAGE 36

4350 WEST STREET



SEE PAGE 36

FOR COMPLETE ENG DATA SEE
ORIGINAL DEDICATION PLAT IN
BOOK 49, PAGE 82 OF RECORDS.

UTILITY & DRAINAGE EASEMENTS ARE
10 FT WIDE ON FRONT BOUNDARY; AND 8
FT WIDE ON SIDE OF LOT AS INDICATED BY
DASHED LINES, UNLESS OTHERWISE SHOWN